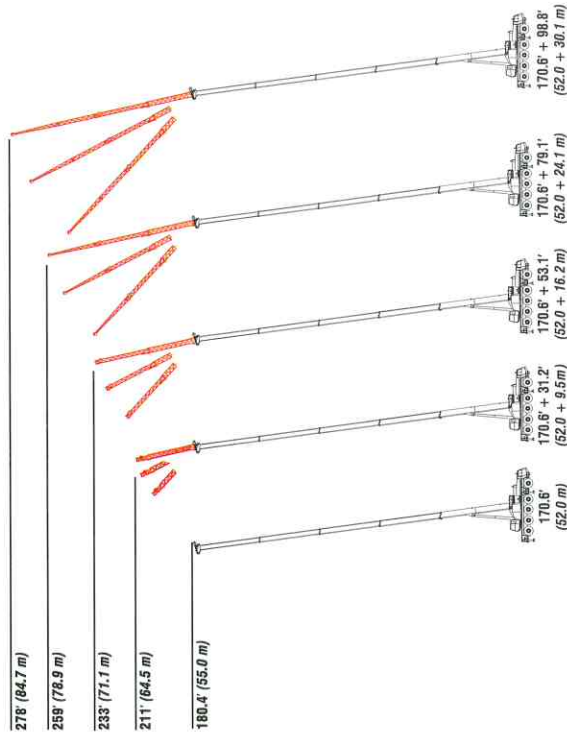


ATG 3130

All-Terrain Crane
130-ton (117.93 mt)



Upper structure

- Mercedes Benz engine with 177 hp (130 kW)
- Central lubrication system
- Boom hoist float and swing brake release for boom dolly applications
- Fine inching mode
- High speed mode
- Free swing and automatic swing brake modes

Operator's cab

- Tilting interior where the operator's seat, joystick controllers, floor controls and pedals, and main console tilt within the cab
- Crane instrumentation and operational documents have North American units of measure
- Outrigger, drive and steering controls
- Air conditioning
- Power front window
- Integrated cab walks
- Cab floodlight

5-section full power boom with attachment flexibility

- 42.7 ft to 170.6 ft (13.0 - 52.0 m) five section boom
- Wind speed indicator
- 31.2 ft to 53.1 ft (9.5 - 16.2 m) two piece offsettable fly
- One 24.6 ft (7.5 m) fly extension plus 53.1 ft (16.2 m) two-piece telescoping lattice fly is one-man operation — easy to erect and stow

Carrier

- Mercedes Benz engine with 517 hp (380 kW)
- ZF AS-Tronic automated 16-speed transmission
- Top speed of 52.8 mph (85.0 km/hr)
- Variable speed on-highway steering
- Five auxiliary steering modes
- Third axle lift system
- 10x6 and 10x8 drive
- 20.5R25 tires
- Central lubrication system
- Cruise control
- Engine compression brake and interarder
- Ergonomically positioned digital instrumentation, located in both the carrier and operator's cabs, provide quick access to critical driving and crane operation data.

Ground control outrigger/suspension

- Starts and stops carrier engine
- Throttles carrier engine up/down
- Suspension operation:
 - Raise/lower suspension on outriggers
 - Auto leveling on tires
- Outrigger operation:
 - Extend/retract two beams together
 - Extend/retract all jacks together
 - Auto leveling on outriggers
- Ground bearing force monitoring (optional)



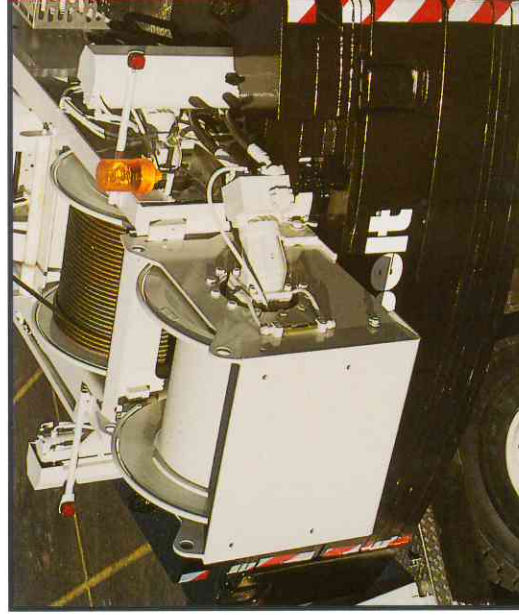
Cockpit multi-vision (CMV)



Cockpit graphic control (GGC)



Ground control outrigger / suspension



The ATC's powerful, responsive and productive winches generate the strongest winch line pull in its class with 21,010 lbs (9,530.0 kg) and a winch line speed of 526 fpm (160.21 m/min). Piston motors provide precise movement at any speed.

- Third wrap indicators with function lock-outs
- Drum rotation indicators

Link-Belt Construction Equipment, Lexington, Kentucky
www.linkbelt.com

©Link-Belt is a registered trademark. Copyright 2005. All rights reserved. We reserve the right to change designs and specifications at any time.

Litho in U.S.A. 336

03/05 #4304